



## Dent Station, Cowgill, Sedbergh

Asking Price £425,000

Your Local Estate Agents  
Thomson Hayton Winkley



[www.thwestateagents.co.uk](http://www.thwestateagents.co.uk)

A unique opportunity to acquire the iconic Grade II listed Dent Station, England's highest mainline railway station situated on the famous Settle to Carlisle railway line and currently operating as an exclusive holiday let property within the Yorkshire Dales National Park. Stunning location.







## ACCOMMODATION

Offered for sale for only the third time since being built in 1877 and situated on the legendary Settle to Carlisle railway line, Dent is England's highest mainline railway station. The classic Victoria station property has undergone a sympathetic restoration and has been available for holiday rental since 2007.

Located in beautiful Dentdale, Yorkshire, this iconic Grade II Listed property is now being offered to the market either as a private home, or to continue to provide a distinctly different self-catering experience. This is a destination property that will not only attract those with a passion for railways, but also those who want to enjoy the perfect vantage point from which to take in some of the Dales' most breathtaking natural scenery.

Dent Station opened in 1877, and is approximately eight miles north of the famous Ribbleshead Viaduct. The station sits 1,150 ft above sea level, includes approximately 1/3 of an acre of land, and positioned alongside the railway line that weaves its way from the infamous Blea Moor Tunnel four miles away.

The former station house and platform have been restored to the highest standards by the current owners who have always loved the railway. Steam excursions run on the line next to the converted station at weekends with visits from famous Flying Scotsman and Tornado.

This unusual property has been finished with a classic 'first class' period railway look. The restored woodwork is finished in Midland Railway maroon and cream, while inside a coal-fired Rayburn is welcoming, complemented by modern underfloor heating.

The accommodation has been imaginatively designed, with the former booking hall now a spacious lounge and the original ladies' waiting room transformed into a kitchen/dining area. The three bedrooms sleep a total of six people and new bathrooms have been carefully chosen to provide a traditional look, in keeping with the property.

Around five passenger trains in each direction link Leeds and Carlisle and stop at Dent daily, and the line is regularly used by freight trains. Dent Station is a great place from which to explore the Dales by train, with rover tickets available allowing exploration of surrounding towns and villages. Dent village itself is approximately four miles away and has its own brewery. The trip from Settle to Carlisle is regarded as one of the most scenic and quintessential railway journeys in the world.

This holiday home is a must for those who love the great outdoors, all the comforts of modern living and a good measure of romantic nostalgia thrown in.





## GROUND FLOOR

### ENTRANCE HALL 14' 0" x 6' 5" (4.27m x 1.96m)

Double door with adjacent single glazed windows, two radiators, traditional column, exposed beams, stone flagged flooring.

### SITTING ROOM 16' 6 max" x 13' 10 max" (5.03m x 4.22m)

Double doors with adjacent single glazed windows (originally ticket office window), single glazed window with views, two cast iron radiators, traditional open fireplace with cast iron features and tiling, fitted bench, stone flagged flooring, wall lights, deep skirting, television point.

### DINING KITCHEN 20' 7 max" x 13' 10 max" (6.27m x 4.22m)

Four single glazed windows, two traditional cast iron radiators, good range of base and wall units, stainless steel sink, solid fuel Rayburn cooker, built in oven, electric hob with extractor hood, space for washing machine, tumble dryer, dishwasher and fridge freezer, feature wall, trap door, wall lights, tiled splash back, flagged flooring and solid wood flooring, spiral staircase, television point, telephone point, deep skirting.

### BEDROOM 13' 4 max" x 6' 7 max" (4.06m x 2.01m)

Double doors with single glazed fan light, two single glazed windows, traditional cast iron radiator, stone flagged flooring, loft access.

### BEDROOM 14' 9 max" x 12' 9 max" (4.5m x 3.89m)

Three single glazed windows, two traditional cast iron radiators, traditional cast iron fireplace with stone surround and tiled hearth, telephone point, wall lights.

### SHOWER ROOM 10' 9 max" x 8' 9 max" (3.28m x 2.67m)

External door, single glazed window, two traditional cast iron style radiator with heated towel rail, wash hand basin, fully tiled shower cubicle with thermostatic shower, recessed spotlights, extractor fan, part tiling to walls, tiled flooring, loft access,

### CLOAKROOM 4' 3" x 3' 5" (1.31m x 1.05m)

Single glazed window, traditional cast iron radiator, W.C. with high level cistern, wash hand basin, tiled flooring, recessed spotlight, extractor fan, deep skirting.

### CLOAKROOM 4' 7" x 5' 8" (1.40m x 1.74m)

Single glazed window, traditional cast iron style radiator with towel rail, W.C. with low level cistern, wash hand basin with tiled splash back, recessed spotlights, extractor fan, tiled flooring, deep skirting.

### INNER HALL 5' 0" x 3' 9" (1.54m x 1.15m)

Loft access, tiled flooring.

## FIRST FLOOR

### BEDROOM 20' 8 max" x 13' 11 max" (6.3m x 4.24m)

Two single glazed windows, two traditional cast iron radiators, wall lights, loft access.

## OUTSIDE

The property is situated within an acre of land running parallel with the Settle to Carlisle line. A patio at the southern end of the station permits views South towards Blea Moore overlooking Dent Head and Arden Gill Viaduct, West down towards the stunning Dentdale and to the North towards Rise Hill Tunnel. There is also ample off road parking

### BOILER ROOM 9' 4" x 4' 11" (2.85m x 1.50m)

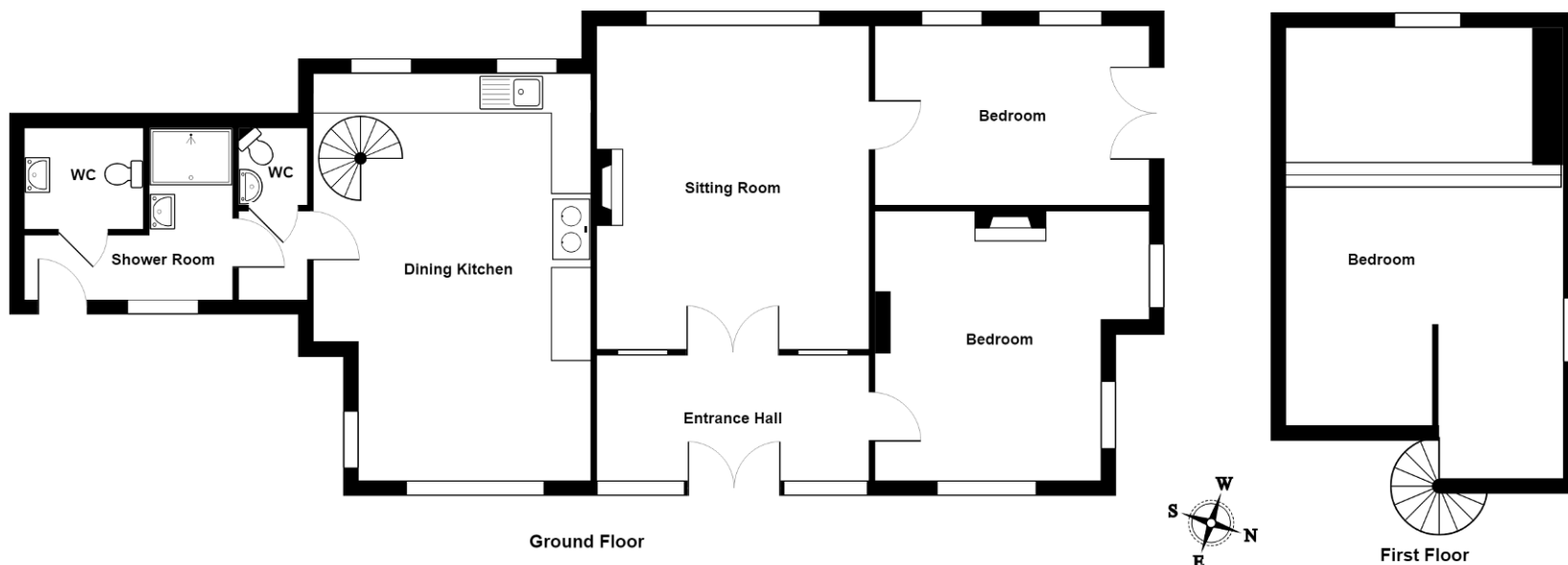
Timber door, single glazed window, oil central heating boiler, hot water tank, lighting.

## SERVICES

TBC



# EPC EXEMPT



Ground Floor

Dent Station, Cowgill

For illustrative purposes only - not to scale. The position and size of features are approximate only.  
© North West Inspector.

First Floor

## DIRECTIONS

Proceed along the A65 towards Ingleton. Upon entering the village take the B6255 signposted Hawes continue for approximately 10 miles turning left onto Newby Head gate signposted Dent and Dent Station. Continue on this road for approximately 3.5 miles. After the bridge turn right into Coal road which merges with Lea Yeat Brow and also signposted Dent Station and Garsdale Head. Follow the road up the hill and Dent Station can be found on the right adjacent to the railway line.

## Important Notice

Whilst every care has been taken in the preparation of these particulars, all interested parties should note: (i) the descriptions and photographs are for guidance only and are not a complete representation of the property; (ii) plans are not to scale, are for guidance only and do not form part of a contract; (iii) services and any appliances referred to have not been tested, and cannot be verified as being in working order; (iv) no survey of any part of the property has been carried out by the vendor/lessor or Thomson Hayton Winkley Estate Agents; (v) measurements are approximate and must not be relied upon and have been taken using a laser measuring device. For convenience an approximate imperial equivalent is also given; (vi) any reference to alterations to, or use of, any part of the property does not mean that any necessary planning, building regulations or any other consent has been obtained. A purchaser/lessee must find out by inspection or in other ways that these matters have been properly dealt with and that all information is correct; (vii) nothing in these particulars or any related discussions forms part of any contract unless expressly incorporated within a subsequent agreement; (viii) please contact the Agents before travelling any distance or viewing properties to check availability and confirm any point which may be of particular importance. THW Estate Agents Ltd is a separate legal entity to the solicitors firm of Thomson Hayton Winkley Ltd which has a different ownership (although some of the owners are the same). Clients of THW Estate Agents Ltd do not have the same protection as those of Thomson Hayton Winkley Ltd.

Your Local Estate Agents  
**Thomson Hayton Winkley**

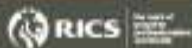
**Kendal Office**  
112 Stricklandgate  
Kendal  
T. 01539 815700  
E. kendal@thwestestateagents.co.uk

**Windermere Office**  
25b Crescent Road  
Windermere  
T. 015394 47825  
E. windermere@thwestestateagents.co.uk

**Grange-over-Sands Office**  
Palace Buildings  
Grange-over-Sands  
T. 015395 33335  
E. grange@thwestestateagents.co.uk

**Kirkby Lonsdale Office**  
29 Main Street  
Kirkby Lonsdale  
T: 015242 71999  
E: kirkby@thwestestateagents.co.uk

THW Estate Agents Limited. Company registered in England and Wales No 10487566. Regulated by RICS.



www.thwestestateagents.co.uk