

Ribblehead: Footsteps in Time

Free walks, trails, tours, theatre and exhibitions

APRIL TO SEPTEMBER 2023

The iconic Ribblehead Viaduct and shanty site is a 'must see' for visitors to the Yorkshire Dales.

We are pleased to be offering our FREE Ribblehead heritage walks, trails and tours for a full season April to September 2023.

Travel the spectacular Settle to Carlisle line to Ribblehead. There's something for everyone from the photographer, theatricals, geologists, walkers, and those who prefer an easy afternoon in the comfort of the visitor centre to enjoy the landscape.

Ribblehead station has many original features and is painted in the traditional colours of the then Midland Railway. Why not start the day with coffee and cake? The café opens from 10am until 3.30.



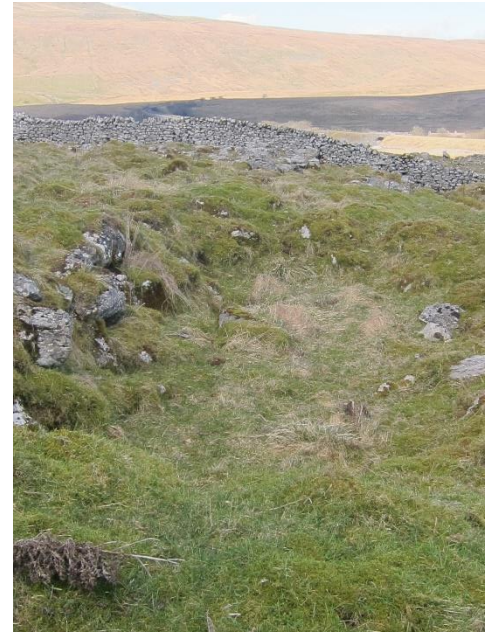
The Navy Walk
Distance 8 miles

Leave from the station yard from the train arriving 10.38
Lunch 12.30 approximately
Arrive back in time for the trains home.



Our navy walk is a hiker level walk through the Ingleborough nature reserve and Gauber High Pasture on the opposite side of the line. You have an uninterrupted view of the station buildings on our approach.

Wonder at the natural beauty of the limestone landscape. Witness its harshness and isolation.



Walk by the remains of a Norse settlement from approximately 850 as dated by coins discovered at the site. After a short break at Great Douk cave, the next stop is Chapel le Dale

We have a lunch at St Leonards where you'll be entertained with a graveyard theatre production. Many navvies and families were buried here. Who would have though graveyards were so interesting and colourful?



See a different view of the viaduct as we walk towards the shanty camps, passing under the viaducts majestic arches. There should be time for refreshments before the train home.

Trails and Tramways. Footsteps in time

Distance approximately 4.5 miles.

We leave Ribbleshead station yard around 11.00

Return 15.00 approximately

This trail takes us a glimpse at history before the shanty huts were built and industry arrived and on to the last century. You'll take a stony path with stunning views of all three peaks; Pen-y-Ghent, Ingleborough and Wharfedale. There's a track which leads to the signal box and the entrance of Blea Moor tunnel. This is a relaxed pace walk and talk trail



After lunch at the stonemasons yard, walk the tramway paths around the shanty site.

The tramway locomotive shed was demolished after the line and viaduct construction was completed but the evidence of its existence remains.

To bring it all to life, join in an exciting outdoor theatre production, 'Mischievous in the Navy Hut'. All are welcome at Batty Green which is a short distance from the visitor centre.



This promises to be an engaging, atmospheric and light hearted celebration of the ups and downs of life for families living there. It's well researched, full of fun and humour and suitable for all our visitors. Feel free to dress for the occasion!

Shanty site tours

Distance 2.5 miles

Meet at the Ribbleshead visitor centre at 12.30

Arrive back in good time for trains home.



The navvies and families worked, played, fought and, often, died during the construction of the railway. Trace their footsteps, witness the remains of their existence; their homes, offices, shops and work places.

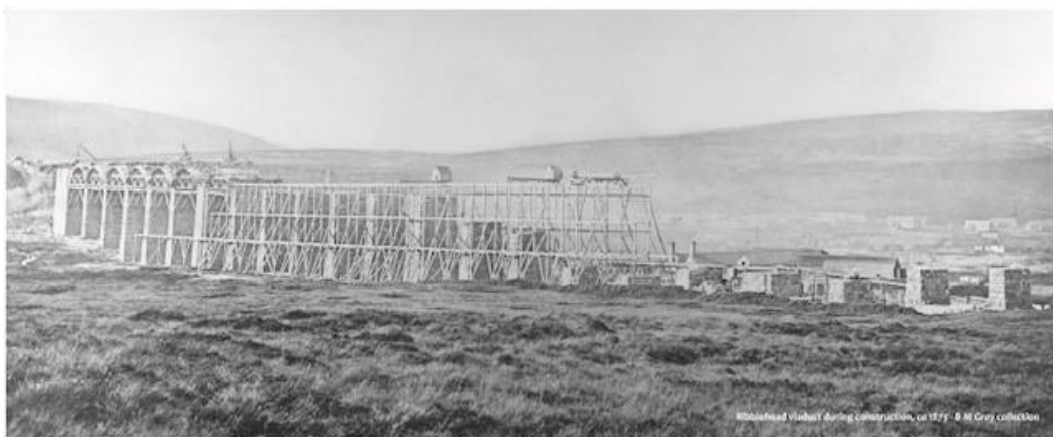


Photo from the B Gray collection

There's a stony but well-marked pathway leads to the viaduct. The viaduct was open to goods and finally passenger trains by 1876. It underwent major restoration in the late 1980s. The chief engineer working on its restoration will be there to talk through its construction and restoration with light hearted stories and lots of interesting information for the enthusiast. Questions welcome. Without this it would not be in use today.



The landscape is rich in evidence of a bygone time of steam and the labours to build the viaduct and tunnel in order to lay the line.

This plate layers hut would have been used to escape the bad weather by the men working this section to inspect and maintain it in the time of steam.

As the nature of the landscape is unsuitable for some, we have exhibits and photographs in the visitor centre where you will receive a warm welcome. Hear tales of the railways past in to the present. Take a look at the memorabilia and a nostalgic browse of our exhibits in this original and well-preserved station building.

IMPORTANT INFORMATION

Be prepared, it's a harsh environment as well as a beautiful one. The weather at Ribblehead can quickly turn cold and wet. Even on a good day, warm clothing can be needed. You will need boots & waterproofs for these events. Don't forget a packed lunch and plenty of water. We reserve the right to refuse anyone that is inappropriately dressed for safety reasons. We may need to cancel or amend the route in severe weather. We cannot be responsible for participants and their property. We cannot take anyone under 10 years of age on the walks and tours for safety reasons. Other children under 18 years and vulnerable people must be accompanied by a responsible adult. We are unable to take dogs out with us. They are welcome on a lead at the visitor centre and outdoor theatre.

As we are a FoSCL volunteer group, there's no charge. We do appreciate donations to take the incredible history and heritage of the Ribblehead site into the future for others to enjoy.

Groups wishing to book a shanty site tour are welcome.
Please email ribblehead@settle-carlisle.com

Always check train times and our website before travelling.

At time of posting these are as follows.

Carlisle 8.24, 9.48 arrives Ribblehead 9.47, 12.07

Leeds 9.20, 10.49 arrives Ribblehead 10.38 and 12.07

Ribblehead 16.47 arrives Carlisle 18.00

Ribblehead 16.14 arrives Leeds 17.48

VOLUNTEER AT RIBBLEHEAD

We are looking to recruit new volunteers with a strong interest in the heritage site. If you'd like to be part of our passionate FoSCL team and assist our tours,

please get in touch. Initially you'll shadow one of our knowledgeable guides on site. If you enjoy the group experience and the history of the land, we can support you to confidently take your own part in future seasons. Please email ribblehead@settle-carlisle.com